



Tel: +27 (0)22 433 8505
Email: tourism@wcdm.co.za
Website: www.capewestcoast.org
Twitter: @CWest_Coast1
Facebook: Cape West Coast Tourism
Enquiries: Lizl Swart

WEST COAST FLOWER REPORT - 2014

(Updated 04/08/2014)



For updated weather reports, you may visit the following websites:



www.yr.no

www.accuweather.com

www.windguru.com

www.fallingrain.com

www.weathersa.co.za

Flowerline - 072 938 8186



Remember that along with the flowers it is also **Whale season!** For updates on sightings or to log sightings, visit www.awhaleofaheritageroute.co.za/westcoast_whalesightingsreport.pdf !!!

NAMAQUA WEST COAST AREA

HARDEVELD

LOCATION OF FLOWERS: In Nuwerus langs die Landplaas pad in die dorp en in Kambro straat die skool gronde. Vir die kleiner blomme moet mense uitklim en rondloop

TYPE OF FLOWERS

Geel vygies, oranje daisies.

HOW MANY FLOWERS:

Please note that this is someone's perception, and not a guarantee.

Fields / Plenty / Patches / Few

STRANDFONTEIN

LOCATION OF FLOWERS: Drive between Lutzville and Strandfontein and Doringbaai

TYPE OF FLOWERS all kinds of flowers, very colourful.

HOW MANY FLOWERS:

Please note that this is someone's perception, and not a guarantee.

Fields / **Plenty** / **Patches** / Few

LOCATION OF FLOWERS: Wandering Whale Labyrinth, Doringbaai

TYPE OF FLOWERS daisies, gazanias, pelagonias

HOW MANY FLOWERS:

Please note that this is someone's perception, and not a guarantee.

Fields / **Plenty** / **Patches** / Few



DORINGBAAI

VANRHYNSDORP

LOCATION OF FLOWERS:

In Vanrhynsdorp self is daar baie op die sypaadjies en in mense se tuine. Draai net links op met die pad langs die Mercedes garage en ry daardie deel van die dorp. end van kerkstraat.....

TYPE OF FLOWERS:

Daisies, Glasoog magrietjies, tonginniekies

HOW MANY FLOWERS:

Fields / **Plenty** / **Patches** / Few

LOCATION OF FLOWERS:

Vanrhynsdorp , R27 tot Vanrhynspas

TYPE OF FLOWERS:



HOW MANY FLOWERS:

Fields / **Plenty** / **Patches** / Few

LOCATION OF FLOWERS:

Gifberg, Vanrhynsdorp

TYPE OF FLOWERS:

Velde vol wit en oranje blomme. Vygies ook begin blom

HOW MANY FLOWERS:

Fields / Plenty / Patches / Few

CEDERBERG AREA

CLANWILLIAM

LOCATION OF FLOWERS: RAMSKOP NATURE GARDEN, VREDE OORD CEMETARY, OPEN ERFS IN THE UPPER AREA OF TOWN, N7

TYPE OF FLOWERS: MOSTLY REENBLOMME (WHITE DAISIES), VYGIES

HOW MANY FLOWERS:

Fields / Plenty / **Patches** / Few

Please note that this is someone's perception, and not a guarantee.

FLOWER SHOWS:

Name:

CLANWILLIAM WILD FLOWER SHOW

Date & Time:

28 AUGUST – 6 SEPTEMBER (9:00 – 18:00 daily)

Venue:

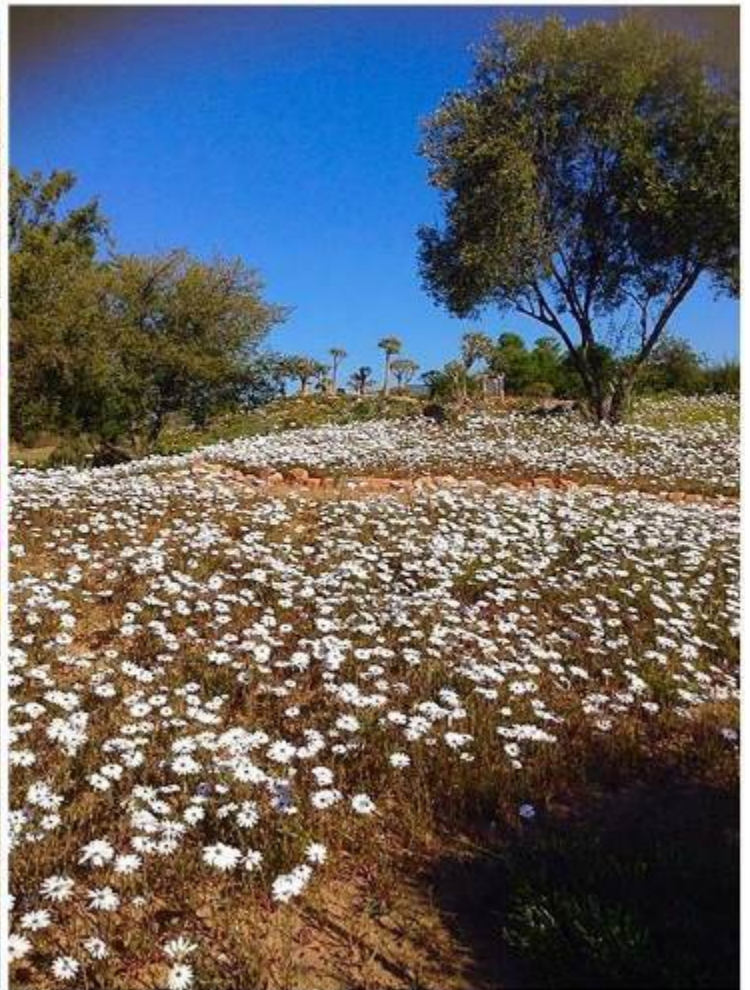
OLD DUTCH REFORMED CHURCH (Blommekerk)

Admission:

R30 adults – R25 pensioners – R5 children

Contact detail:

027 482 2024 – cederberg@lando.co.za
www.clanwilliamwildflowerfestival.co.za



LAMBERT'S BAY

LOCATION OF FLOWERS: Roadside patches, all over town and surrounds.

TYPE OF FLOWERS: Please see notes attached.

HOW MANY FLOWERS: **Fields / Plenty / Patches / Few**



12:50pm - 28 July 2014
Coming into Lambert's Bay on the R364.
'Welcome to a 'Blooming Marvelous' Bay'!

Lambert's Bay lies approximately 240km's from Cape Town, following the R27 Coastal Road, a very scenic coastal flower route to take. A coastal town with unique West Coast charm. Lambert's Bay's soils are mostly those of Sandveld and Strandveld character. Keep an eye out for the unique 'Rotstert'!

At present it is still early days for flowers here in Lambert's Bay, but very good 'flower' weather over the last few months, gives promise of an exceptional bloom for the season ahead! Periods of good rains followed by lots of sunshine in between will have given the seedlings all the sun and rain needed to flourish and although at the moment we are still expected to have a few more weeks of this weather, we expect the flowers to come into full bloom by middle August and, weather permitting will continue well into September.

Our weather forecast for this week looks very promising, clear skies and sunny days, but cloud coming over again over the weekend although temperatures remain moderately high.

At the moment the following plants are in bloom and looking quite fabulous!

- Trachyandra Falcata (Namakwa Kool)
- Veltheimia Capensis (Sandlelie)
- Lachenalia Rubida (Sand Viooltjie)
- Gethuyllis Afra (Kukumakranka)
- Ferraria Densepunctulata (Grys Uiltjie)
- The Babiana Ringens (Rotstert)
- Lapeirousia Jacquinii (Blou Koringblom)
- Gladiolus Gracilis (Blou Pypie)
- Limeum Africanum (Koggelmandervoet)
- Montinia Caryophyllacea (Peperbos)
- Melianthus Elongatus (Truitjie)
- Oxalis pes-caprae (Suring)
- Oxalis compressa (Baster Suring)
- Pelargonium (Rooi Malva)
- Solanum Linnaeanum (Gifappel)
- Salvia Africana-Lutea (Strand Salie) Elandbaai
- Salvia Lanceolata (Rooi Salie)
- Manulea Altissima (Witkoppie)
- Lyperia Triste (Traanblommetjie)
- Arctopus Echinatus (Platannadoring)
- Oncosiphon Glabratum (Wildekamille)

Lambert's Bay has a large amount of Oxalis at present. The Lyperia Triste (Traanblommetjie) has shown it's lovely face and bear in mind this flower can be viewed in any weather and even at night, so why not do a unique 'Night Flower' search! What a picture that would be? Although a lot of this tremendous scenery is visible from roadside, more unique flower types will require you to walk deeper into the landscape and sometimes it will require expert guides to take you to specific locations where certain flowers bloom.

Lambert's Bay Tourism would like to thank,

Arend & Cornel De Waal

Arend De Waal Flower Tours 0833541788 (Available Weekends Only)

Kosmoshuise Accommodation 0837315859

Lambert's Bay's Tourism Office is hosting a 'Flower-Power' Competition throughout the season! Snap a fabulous 'Flower Power' picture and send it to us to stand a chance to win a weekend in our beautiful town! Including accommodation, meals and sightseeing! Join us and find out more on our Facebook page (Lambert's Bay Tourism)!

BERGRIVIER AREA

VELDDRIF

LOCATION OF FLOWERS: Op al die leë erwe in die dorp, oppad na Dwarskersbos, langs die pad. Kyk gerus hoe mooi blom Bergrivier golfklub. 'n Fotograaf se droom.

TYPE OF FLOWERS: Geel Bobbejaankool, Geel Ossiebossie, Geel Hongerblom, Geel Langbeensuring, Wit Madeliefies, Wilde Kamille, Rooi Viooltjies, Blou Salie, Skilpadbessie, Wit Slakblom, Jonkmansknoop, Weeskindertjies, Oranje Magrietjies, Oranje Gousblom, Trekkertjies, Spinnekopblom, Soetbobbejaantjies, Felecia, Vyf-Pond-Bos (Slaaibos)

HOW MANY FLOWERS:Fields / **Plenty** / **Patches** / Few*Please note that this is someone's perception, and not a guarantee.*

SALDANHA AREA

HOPEFIELD

LOCATION OF FLOWERS:

In town on vacant plots
 Next to Soutriver in town
 On road to Langebaanweg (R45)
 Next to roadside from Bloemendal farm to R27,
 Plaasmol (R45) 5km outside Hopefield
 Gravel road between Langebaanweg and Cloeteskraal
 Next to the road at the entrance of the farm Sandvlei
 Road between R45 and Moorreesburg (R311)
 On the farm Bontheuwel next to R45
 At the back of old cemetery
 At the back of boys bordingschool

TYPE OF FLOWERS:

Wit Reënblommetjies (Daisies), Oranje Gousblomme, Arum Lillies (Varkore), Geel Bobbejaantjie, Rotsstert, Poprosie, Speldekussing, Viooltjie, Geel Klapperbrak, Restios, Pienk Suring, Men in boat, Platdoring, Kapokbossie, Drumsticks, Krimpvarkie (Hedgehog lilly),

HOW MANY FLOWERS: Fields / **Plenty** / **Patches** / **Few****FLOWER SHOWS:****Name:**

Hopefield Fynbos Show 28-31 August 2014

Date & Time:

09h00-17h00

Beergarden open till late

Venue:

Hopefield Sports Ground, Ou Koperfontein way Hopefield

Admission:

R20 Adults, R15 Pensioner, R5 Children under 12

Contact detail:

Fiona Kotze 022 783 0856

Lizelle Strydom 022 723 1720 / 073 187 6764

JACOBSBAAI

LOCATION OF FLOWERS:**TYPE OF FLOWERS:**

Kleinkruid

Foveolina tenella

Bietou

Chrysanthemoides monilifera

Soetkop dikblaar

Senecio sarcoides

Ossierrapuis	Crassothonna cylindrica
Hongerblom	Senecio maritimus
Reenblommetjies	Dimorphotheca pluvialis
Gousblomme	Arctotis hirsuta
Varkoor	Zanthesdeschia aethiopica
Calendula	Arctotheca calendula
Suring	Oxalis pes-caprae

HOW MANY FLOWERS: Fields / Plenty / Patches / Few

LANGEBAAAN

LOCATION OF FLOWERS :Road Langebaan Gate to Geelbek:

Type of Flowers : Kaopkbossie(White Flower),Bobbejaankool (Yellow flower)
Strand Sallie(Brown Flower),Harpuisbos/Euryops(Yellow Flower),Restio/Riet(Brown Flower),Blombos(White Flower),

LOCATION OF FLOWERS

Type of Flowers

:Oostewal & Sunbird Drive

:Reenblommetjies (White)

LOCATION OF FLOWERS

Type of Flowers

: Langebaan Town / Langebaan Country Estate

: Reenblommetjies (White), Geelhongerblomme

: Gousblommetjies, Blue Flax/ Sporrie

HOW MANY FLOWERS:

Fields / Plenty / Patches / Few

LOCATION OF FLOWERS

Type of Flowers

:Langebaan Gate to Seeberg Hide

:Orange gousblom, Yellow Suring, Skilpad bossie(Yellow),
Sukkelbossie(White Flower),Bobbejaankool(Yellow Flower),
Spinnekopblom Stems, Hongerblom(Yellow & Pink).

HOW MANY FLOWERS: Fields / Plenty / Patches / Few

LOCATION OF FLOWERS

Type of Flowers

: Langebaan Town / Langebaan Country Estate

: Reenblommetjies (White), Geelhongerblomme

: Gousblommetjies, Blue Flax/ Sporrie (Blue Flower)

HOW MANY FLOWERS: Fields / Plenty / Patches / Few

LOCATION OF FLOWERS

Type of Flowers

:Road Langebaan Gate to Geelbek:

: Kaopkbossie(White Flower),Bobbejaankool (Yellow flower)
Strand Sallie(Brown Flower),Harpuisbos/Euryops(Yellow Flower),Restio/Riet(Brown Flower),Blombos(White Flower),
Geelmelkbos(Yellow Rossete).

HOW MANY FLOWERS: Fields / Plenty / Patches / Few

LOCATION OF FLOWERS

Type of Flowers

:Road to Geelbek and Kraalbaai

:Bietou(Yellow Flower),Blombos(White Flower),
Geelmelkbos(Yellow Rossete),Strand Salie(Brown Flower),
Rooi Naeltjie,Truitjie(Red Flower).

HOW MANY FLOWERS: Fields / Plenty / Patches / Few

LOCATION OF FLOWERS :Myburgh Park, Oliphantskop

Type of Flowers :Suring/Sorrel(Yellow&Pink),Reenblommetjies (White & Orange),
Eendekos(Yellow button flower),Blouflaks.

HOW MANY FLOWERS: Fields / Plenty / Patches / Few

LOCATION OF FLOWERS :Road between Langebaan & Saldanha

Type of Flowers : Reenblommetjies (White)

HOW MANY FLOWERS: Fields / Plenty / Patches / Few

LOCATION OF FLOWERS : Kraalbaai to Tjaarbank

Type of Flowers : All the above shrubs.Helder Kuip Vygie(Yellow Flower)
Vygiebos(Bright Purple),Ice Plant,Suring/Sorrel(Yellow &Pink)

HOW MANY FLOWERS: Fields / Plenty / Patches / Few

☀ **WEST COAST NATIONAL PARK: POSTBERG OPEN 1 AUGUST!!! TEL:- 022 772 2144**

• **Entrance fees: R56– South African Citizens, Kids under 12 – R28**

• **R120– International Tourist per person**

☀ **Open week 8-13 September **FREE** entry for South African Citizens !!**
(Bring ID Book)

SALDANHA

LOCATION OF FLOWERS: - Drive pass Blue Bay Lodge on Camp street between Hansing Engineering and Blue bay lodge. Access to the Lodge, close to the accommodation facilities.
- Saldanha road on the left next to the West Coast Community church,
close to the railway.

TYPE OF FLOWERS : Gousblom

HOW MANY FLOWERS: Fields / Plenty / Patches / Few



SAS SALDANHA NATURE RESERVE

TYPE OF FLOWERS AND HOW MANY AS WELL AS THE LOCATION OF FLOWERS :

GOUSBLOM	- Fields	- Between Malgaskop and Moresonkop
SURING	- Patches	- Lots of them next to most the dirt roads
PIEMPIEMPIE	- Patches	On Baviaanskop and also in the rock area next to the farmhouse. Also on the sea side of malgaskop on the dirt road about 500m after the entrance at the date (close to the 2 nd world war Northbay buildings).
PIENK FROETANG	- Few	- Next to the dirt road at Malgaskop entering from the Academy Gate.
WILDE MALVA	- Patches	- Next to the road on the way to Skulpgate

The area is nice and green but still very early for most plants to flower.

ST HELENA BAY

LOCATION OF FLOWERS: **BRITANNICA HEIGHTS**

TYPE OF FLOWERS:

- Chrysanthemoides monilifera (bietou)
- Eriocephalus africanus (kapokbossie)
- Trachyandra muricata (rolbos Kool)
- Trachyandra falcate (Namakwa Kool)
- Chlorophytum triflorum (Gifkool)
- Hermannia scabra (gewone Popproos)
- Rafnia angulate (soet Houtbossie)
- Indigofera procumbens (Lewertjie)
- Romulea hirsute / cruciate / elliptica (Froetang)
- White gousblomme
- Microloma sagittatum (Bokhorinkies)

HOW MANY FLOWERS: **Fields / Plenty / **Patches** / **Few****

LOCATION OF FLOWERS: **Roadside coming into St Helena Bay**

TYPE OF FLOWERS:

Oxalis pes-caprae (Suring) plenty
Dimorphotheca pluvialis (Reenblommetjie) patches
Chrysanthemoides monilifera (Bitou) large patches
Senecio burchellii (Gifbos) patches
Trachyandra falcate (Namakwa kool) plenty

LOCATION OF FLOWERS: **Da Gama Monument**

TYPE OF FLOWERS _____ :

Oxalis pes-caprae (Suring) plenty
Dimorphotheca pluvialis (Reenblommetjie) patches
Chrysanthemoides monilifera (Bitou) large patches

Nemesia affenis (Leeubekkie) small patches
 Tripteris (Osteospermum) clandestinum (Trekkertjie) patches
 Ruschia ? patches
 Hermannia sp (Poproos) patches on sand road to monument
 Pelargonium capitatum (kus Malva) plenty spread out
 Senecio burchellii (Gifbos) patches, lots more to come
 Euphorbia burmannii (Steenbokbos) plenty
 Ornithogalum sp single plant
 Grielum humifusum (Pietsnot) patches
 Zaluzianskya parviflora (Mini drumsticks) few
 Arctotis hirsute (Gousblom) patches
 Jordaaniella dubia (Sandvygie) patches
 Trachyandra ciliata (Hotnots kool) few
 Trachyandra falcate (Namakwa kool) plenty

LOCATION OF FLOWERS : **Veld and hills between Stompneus and Britannia Bay**

TYPE OF FLOWERS: Dimorphotheca pluvialis (Reenblommetjie) patches
 Foveolina tenella (Wild chamomile) patches on the roadside
 Oxalis pes-caprae (Suring) plenty, large patches on hills
 Hermannia (Poproos) patches

HOW MANY FLOWERS: **Fields / Plenty / Patches / Few**

Please note that this is someone's perception, and not a guarantee.

VREDENBURG

LOCATION OF FLOWERS: R45 and the exits to Paternoster, Saldanha and Velddrif
TYPE OF FLOWERS: Gousblomme (Orange & Yellow), White Rain Daisy, Arum Lillies, Sierangs
HOW MANY FLOWERS: **Fields / Plenty / Patches / Few**

Please note that this is someone's perception, and not a guarantee.

SWARTLAND AREA

DARLING

LOCATION OF FLOWERS: **Darling Renosterveld Reserve** (Access at top of village behind the Darling Primary School or lower down gate in Langfontein street); **also on the plot just below on Petunia Street**
this reserve **Tienie Versfeld Reserve** (R315 Darling – Yzerfontein);
 Tienie Versfeld is still quiet.

Groote Post wine farm on Darling Hills Road – besides winetasting/restaurant visitors can also walk in the veld to

2 days in

view the wildflowers – flower drives can be booked
advance please - R130pp kids under 12 @ R75

Min 4 people /Max 10 people

Cloof and Burgherspost Nature Drives

Cloof and Burgherspost contribute to the conservation of two important veld types: Swartland Granite Bulb Veld and Atlantis Sand Fynbos, both very endangered. In our diversified system, we set the conservation example for the

farming
wine industry.

The Darling region is well known for its beautiful spring flowers. Enjoy a guided game drive and encounter some of South-Africa's most renowned game and bird species including Bontebok, Eland, Red Hartebeest and Zebra while also viewing an array of delicate endangered flowers during the flower season (Aug & Sept). Your contribution helps fund our conservation efforts of this heritage. Times: weekdays 10:00 or 14:00 weekends

natural
flexible

Costs R100 pp 4-6 pax/3pax R125 pp/2 pax R150 pp/1 pax R250
Advance bookings are essential – enquire with Cloof tasting room
Personnel for last minute availability on weekdays or call Jacques

at

084 673 5708

Wildflower Meander

Flora Group walks will take place in the Reserves in and around Darling/Yzerfontein to be confirmed with Helene Preston

Next Wednesday the group plans to do the trail at Groote Post –
another new site for most of you and very interesting,
granite Renosterveld.

beautiful

We explore the reserves for whatever is flowering that day, also find anything new, and to discuss anything botanical as we go along. These are gently walks, so anyone can come along.

to

For more information – 082 222 8135 prestons@telkomsa.net

TYPE OF FLOWERS:

Darling Renosterveld Reserve

Lots and lots of *Gladiolus gracilis* (Blou Pypie) in the Renosterveld Reserve (Will be so for about another week)
This reserve is slowly waking up with *Moraea galaxia*, *Moraea tricolor* (yellow), *Spiloxene serrate*, and of course the *africanus* (Kapokbos). Visitors should walk to the right enter at the gate as that is where the most flowers

Eriocephalus
when they
are

On the plot just below this reserve on Petunia Street

Lots and lots of *Gladiolus gracilis* (Blou Pypie) on the plot - for about another week.

Groote Post: The *Zantedeschia aethiopica* (arum or "vark blomme") are in full bloom on the Darling Hills road. Some other veld flowers have also started.

Yzerfontein they can walk the Sckaapeneiland trail to see lots of *Lachenalia bulbifera*

HOW MANY FLOWERS:

Please note that this is someone's perception, and not a guarantee.

Fields / Plenty / Patches / Few

FLOWER SHOWS:

Name: Presbyterian Church Flower Ministry
Theme "The Seeds of Life"
Date & Time: Friday 1- Sunday 3 August 2014
Time: from 10am-5pm daily;
Venue: Darling Presbyterian Church, Pastorie Street
Admission: Entrance free
Contact detail: For further info contact Rev Ian Bernhardt 0844413091

Name: 97th annual Darling Wildflower Show
Date & Time: 19th, 20th and 21st September 9am – 5pm
Venue: Darling Sports Club
Admission: Adults R40/Children (U18) R20/Children (U12) free
/Pensioners (Friday only) R25
Contact detail: 084 916 1111 www.darlingwildflowers.co.za

Name: "2014 ORCHID FAIR"
Date & Time: 19 - 21 September (Friday to Sunday only!)
Time: from 10am-5pm daily;
Venue: @ Duckitt Nurseries (not at Oudepost Farm!)
Admission: Entrance Fee: R10 Adults & R5 Scholars, R5 Pensioners
Contact detail: tel: 022 492 2606 fax: 022 492 2353
Email: info@duckittnurseries.com www.duckittnurseries.com

YZERFONTEIN

Still a bit early for the veld flowers in Yzerfontein, currently only the heads of the flowers are visible. Will improve in August.

LOCATION OF FLOWERS: Schaap Island Walking Trail is the best place on a warm sunny day to view vygies. Please remember to wear sunscreen and/or a hat.

TYPE OF FLOWERS: Vygies (variation of color)

HOW MANY FLOWERS: Fields / Plenty / Patches / **Few**

To stay informed of any veld walks taking place in or around Yzerfontein/Darling please contact Lubbes Loubser 072 659 6269 (weather permitted)

NAMAQUA NATIONAL PARK



Hi all

Please find updated flower report for Namaqua National Park.

Rainfall, Skilpad section, Namaqua National Park:

March 2014: 14.98mm

April 2014: 7.61mm

May 2014: 16.26mm

June 2014: 86.86mm

July 2014: 52.82mm

The rains at Skilpad was a bit later than previous years, with the first good rains at the beginning of June. Since then we have had excellent, regular rainfall. We expect the flowers to be slightly later than normal, although there are already quite a bit of flowers around. Hopefully the season will last a bit longer with the later rains.

After last weekends' rains the flowers have started to bloom in earnest. orange daisies (*Ursinia* sp.), Surings (*Oxalis* sp) and Pietsnot (*Grielum homifusum*) are very conspicuous. Vygies are coming up in nice patches all over the park.

We are expecting good flowers at the coast, albeit a bit later than normal. Please note that the coast is only accessible for 4x4 vehicles.

Skilpad is accessible with a normal sedan vehicle but a high ground clearance vehicle is needed for the remainder of the park. The road to Skilpad from Kamieskroon is drivable but bumpy from rain damage and we are awaiting the roads department to grade it for us early next week.

Further afield there is also excellent flower patches around Springbok.

Kind regards

BERNARD VAN LENTE
PARK MANAGER: NAMAQUA NATIONAL PARK
 SOUTH AFRICAN NATIONAL PARKS
 PO BOX 117
 KAMIESKROON
 8241
 TEL: +27 (0)27 672 1948
 FAX: +27 (0)27 672 1015

VISIT OUR WEBSITE AT www.sanparks.org



Events in other regions:



CAPE *Floral Kingdom*
EXPO

www.capefloralkingdom.co.za

28 - 31 AUG 2014
DONDERDAG - SONDAG



GROOTSTE BINNENSHUISE FYNBOS EKSPLO TER WÊRELD

BEWAAR • VERBOU • HANDEL • LEEFSTYL

KOM VIER ONS FYNBOS-SKAT

- Geniet 6 000m² Binnenshuise Uitstallings
- Ontspan met Fynbos Lawwe-hoed 'High Tea'
- Ontdek deur Botaniese Plant-identifikasie
- Leer in Cape Floral Kingdom se Veld Apteek
- Beleef Binnenshuise Versiering
- Rek bene in Flora Veld-fliek (Caretakers Groep)
- Ervaar Leefstyl-opsies
- Doen & geniet Fotografie



Besprekings & Navrae: info@capefloralkingdom.co.za | 021 863 0397